

**About Quest A+:**

Digital assessments are accessed via Quest A+. Quest A+ is Learner Assessment’s digital testing application. Quest A+ handles all three response types – multiple-choice, numeric-response, and written response questions.

**Quest A+ URL:**

<https://questaplus.alberta.ca>

**Practice Tests:**

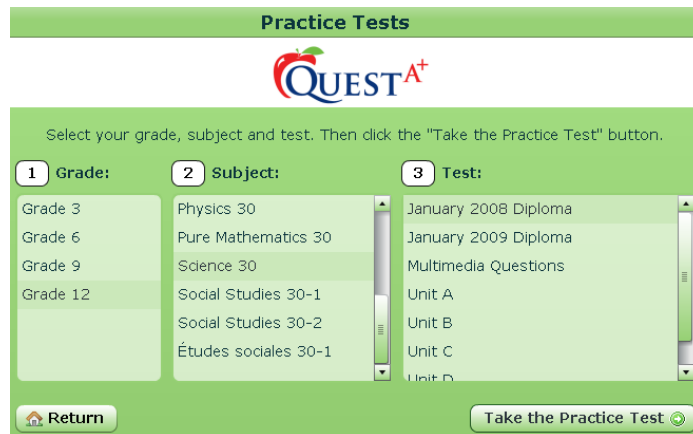
Many practice tests are found on Quest A+. They consist of released items from various subject areas. Practice tests are available on-demand. Practice tests are also self-scoring. Since 2009, over 500,000 practice tests have been downloaded.

To access a practice test:

- Go to <https://questaplus.alberta.ca>
- Click on “Practice Tests”



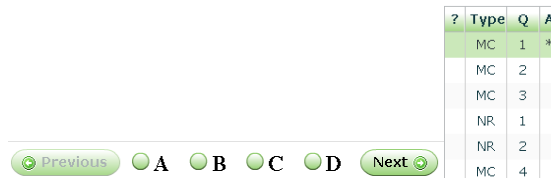
- Navigate to the practice test by selecting a grade, subject, and then a specific practice test.



- Click “Take the Practice Test”

### Responding to Multiple-Choice Questions

Multiple choice questions are answered by clicking on the radio buttons at the bottom of the screen. At anytime during an assessment, responses can be changed. Responding to an item places an asterisk in the “A” column of the question list.



### Responding to Numeric-Response Questions

To respond to a numeric-response question, type in the “response” box at the bottom of the screen.



### Responding to Written-Response Questions

The prompt for written response questions appear at the top of the screen. To gain more room to type, students can click and drag the response interface upwards (shown by the arrow below).

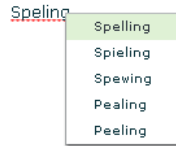


Below is a snapshot of the expanded written response interface window.



**Spell Checking with the Written Response Interface**

The written response interface has a built-in spell checker. If a word is underlined, left-click the word and suggestions for spelling appear. The student can then choose the appropriate alternative.



**Zooming**

The zoom control is at the bottom left corner of the screen. If desired, the zoom slider can be manipulated with this control.



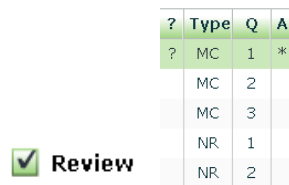
**Time Remaining**

To find out how much time is remaining in the assessment, click "time is hidden". Clicking it again hides the time again.



**Flagging a question for review**

If a student would like to flag a question for review, click the "review" button at the bottom of the screen. Doing so places an asterisk in the "question mark" column of the question list. Clicking the review button again clears the asterisk. If at the end of the assessment the student has questions marked for review, Quest A+ will remind the student to go back and look these questions over.



**Question Navigation**

Students can navigate questions in two different ways:

- Using the “next” or “previous” buttons at the bottom of the screen:



- Clicking on an item in the question list on the left-hand side of the screen:

| ? | Type | Q  | A |
|---|------|----|---|
|   | MC   | 1  |   |
|   | MC   | 2  |   |
|   | MC   | 3  |   |
|   | MC   | 4  |   |
|   | MC   | 5  |   |
|   | MC   | 6  |   |
|   | MC   | 7  |   |
|   | MC   | 8  |   |
|   | MC   | 9  |   |
|   | MC   | 10 |   |

An arrow points to the row for question 9, which is highlighted in light green.

**Ending an Assessment**

To end an assessment, click the “end test” button at the bottom-right corner of the screen. A confirmation window is then displayed. This window displays all of the unanswered questions, incorrect questions, and questions flagged for review. The “incorrect” questions column is not displayed during secure tests.

To end the assessment, click the “yes, I really want to finish this evaluation” box. Then, click “finish”. Otherwise, click “no, go back”.

